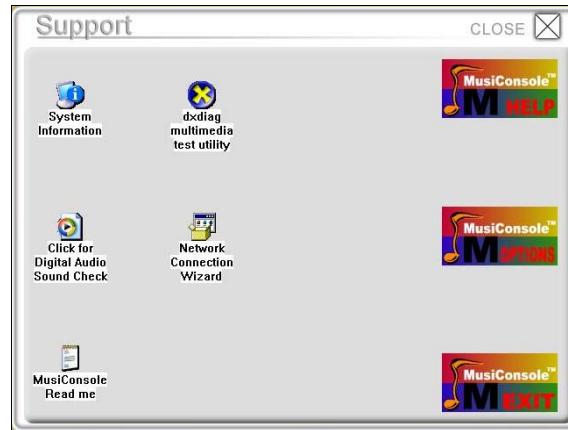




Click on the MusiConsole <SUPPORT> to access MusiConsole options.



Support Menu Options:

System Information: Complete information on your specific system hardware and software.

DX Diag: Complete diagnostic check for sound and monitor issues.

Click for Digital Audio Sound Check: Opens small .wav audio clip in the default audio player.

Network Connection Wizard: Opens a checklist for connecting system to a local network.

MusiConsole Readme: Current MusiConsole version information.

MusiConsole Help: Opens the MusiConsole help system with software tips/pointers and links to www.epiano.com

MusiConsole Options: Opens the options menu described below.

MusiConsole Exit: Exits MusiConsole (if permitted in options).

MusiConsole Options Button Menu:

Reset to Factory Settings: Loads a default menu into MusiConsole replacing your current choice.

Select Graphics Folder: Choose where to find the “skin” for your MusiConsole interface (contact Mindware for options).

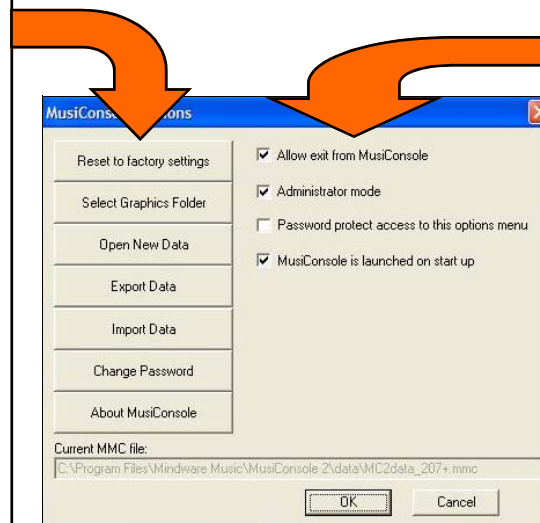
Open New Data: Load a new data file containing group of Icons/Websites into your current “skin”.

Export Data: Saves your current group of icons and websites to a .mmc file of your choosing.

Import New Data: Imports data into the currently open file name. Changing the data but not the file name being used.

Change Password: Allows selection of a new MusiConsole Options Menu password.

About MusiConsole: Information about program and contact information for Mindware Music.



WARNING: We do not recommend changing your default settings/options unless it meets a specific need.

MusiConsole Options Check Boxes:

Allow Exit from MusiConsole: Default: Yes. Choose whether user can exit program.

Administrator Mode: Default: Yes. Choose whether user has access to right-click editing of icons and websites

Password protect options to this options menu: Default: No. Self Explanatory....

MusiConsole is Launched on startup: Default: Yes. Choose whether MusiConsole gets started during boot (default to yes).